



Orchid Close, Abridge, RM4

BUTLER  STAG



A smart and well-presented two bedroom apartment, located on the second floor of a modern purpose built block.



- Second Floor Two Bedroom Apartment
- Two Allocated Parking Spaces
- Short Distance To Theydon Bois Central Line
- Open Plan Lounge/Kitchen/Diner
- Access To Loft Storage
- Available January

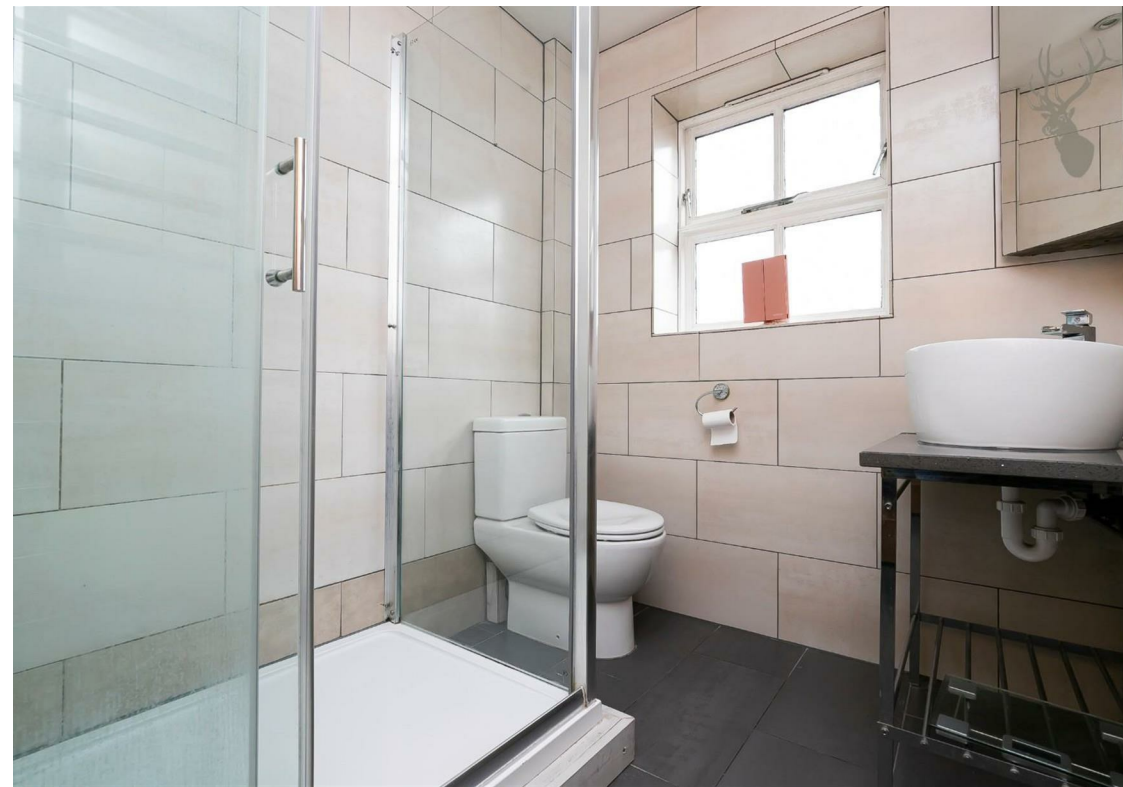
Access via a secure entrance with the stairs leading to the second floor, the apartment boasts a striking open plan lounge/kitchen/diner with the kitchen offering a full range of fitted appliances, two double bedrooms and a smart bathroom. This property also has two allocated parking spaces and access to loft which holds an abundance of storage.

Abridge is a beautiful village that is conveniently located for the nearby towns of Theydon Bois (with central line station), Chigwell and Loughton with transport that links to the M25 and M11. The village offers several pubs and restaurants, a coffee bar, newsagents and a primary school.

Available January

Council Tax Band C





Orchid Close

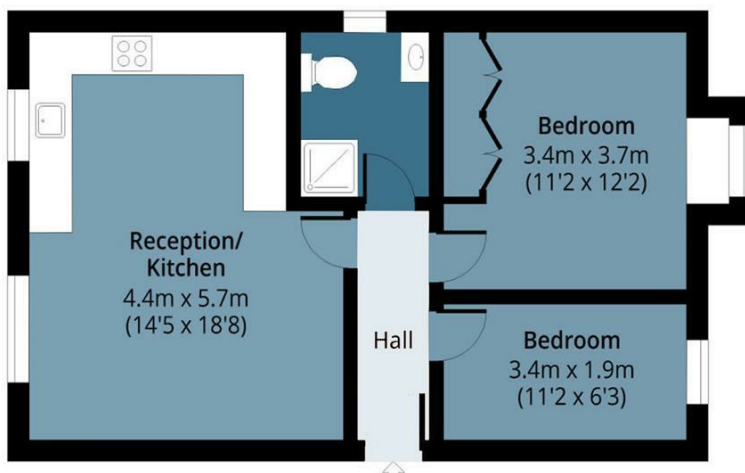
Approx. Gross Internal Area 53.14 Sq M (572 Sq Ft)

BUTLER & STAG



Second Floor

Approx. 53.14 Sq. meters (572 Sq. feet)



Measurements are approximate and for illustration purposes only. While we do not doubt the accuracy and completeness, we advise you conduct a careful independent assessment of the property to determine monetary value.
© @modephoto.uk www.modephoto.co.uk

IMPORTANT NOTICE - These particulars have been prepared in good faith and they are not intended to constitute part of an offer or contract. We have not performed a structural survey on this property and the services, appliances and specific fittings have not been tested. All photographs, measurements, floor plans and distances referred to are given as a guide and should not be relied upon.

BUTLER & STAG

☎ 020 8504 9000

🏠 184 Queen's Road, Buckhurst Hill, IG9 5BD

✉ buckhursthill@butlerandstag.com

www.butlerandstag.uk